

DAIRY COTTAGE

RANGER'S  
COTTAGE

QUEENS ROAD

PARK AVENUE

CONNELL STREET

PITT STREET

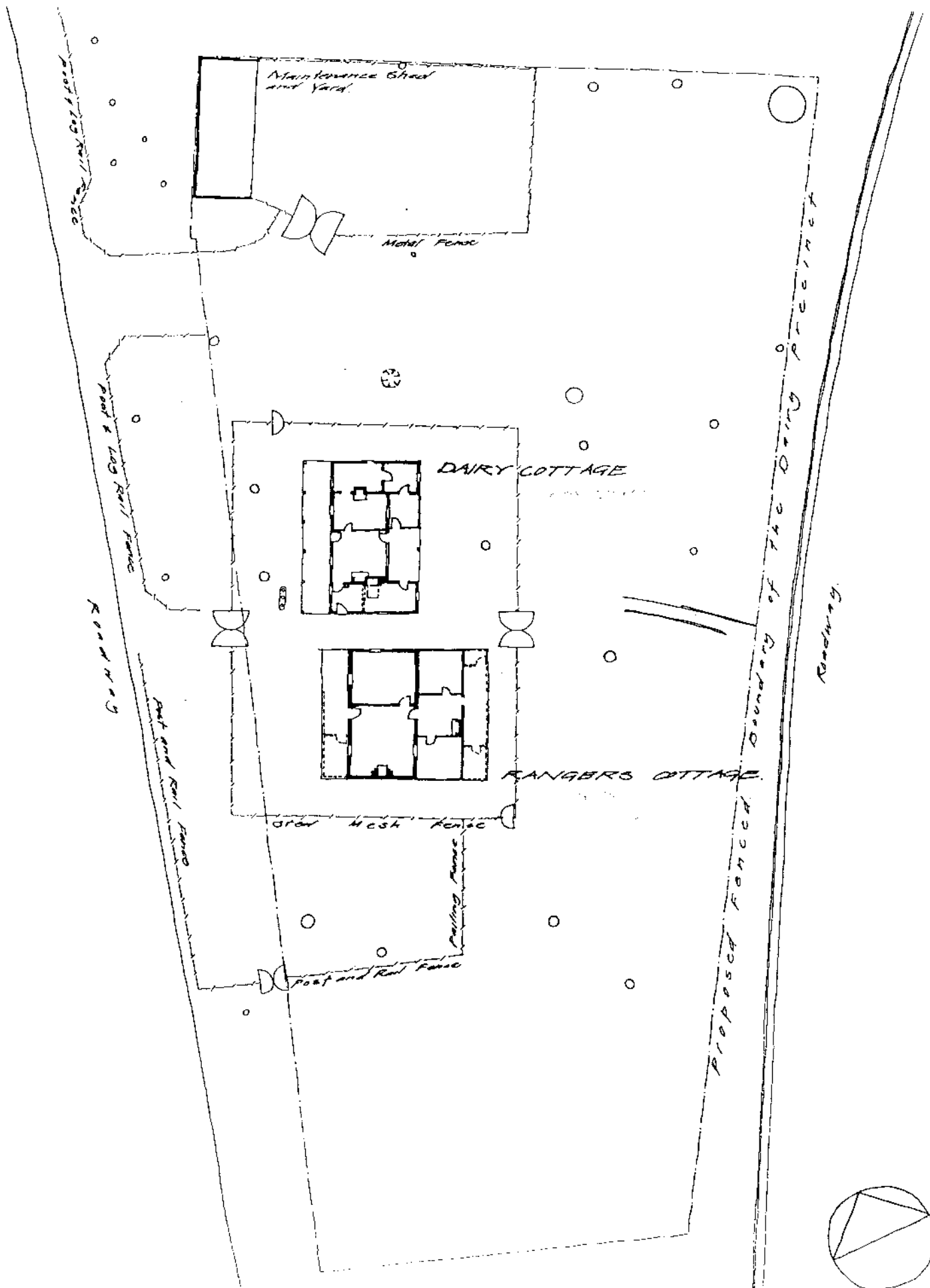
WESTERN HIGHWAY

Parramatta Park

LOCATION PLAN

Adapted from Brian McDonald Pty Ltd  
"Conservation Plan for the  
Government Farm Precinct", 1988.

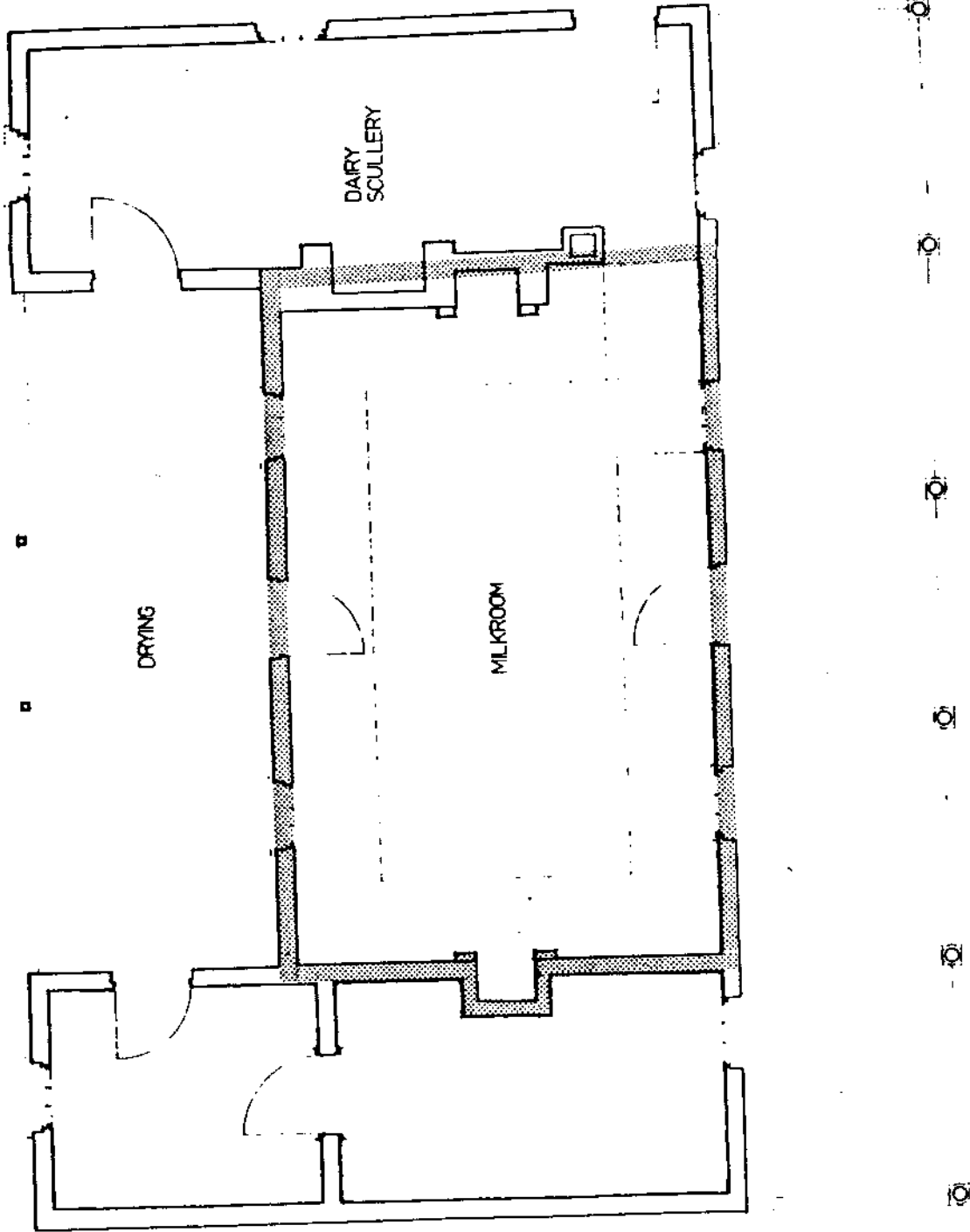




THE DAIRY PRECINCT, PARRAMATTA PARK

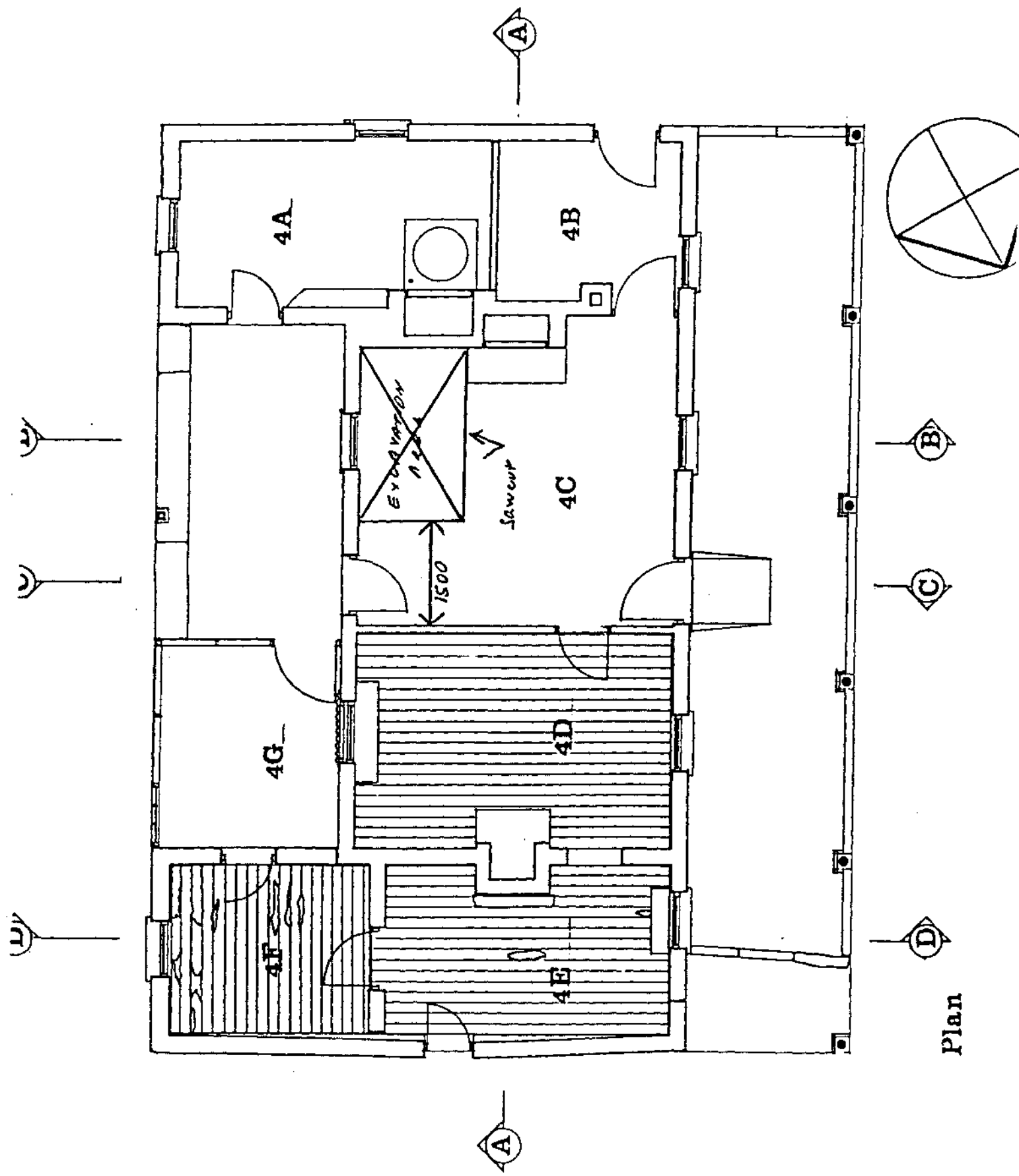
PLAN OF PRECINCT

FIGURE 3  
GOVERNOR'S DAIRY PARRAMATTA PARK  
SITE PLAN  
"MILKROOM" INDICATED BY SHADING



From: Cornell 1979

FIGURE 2  
GOVERNOR'S DAIRY PARRAMATTA PARK  
ROOM 4C EXCAVATION AREA



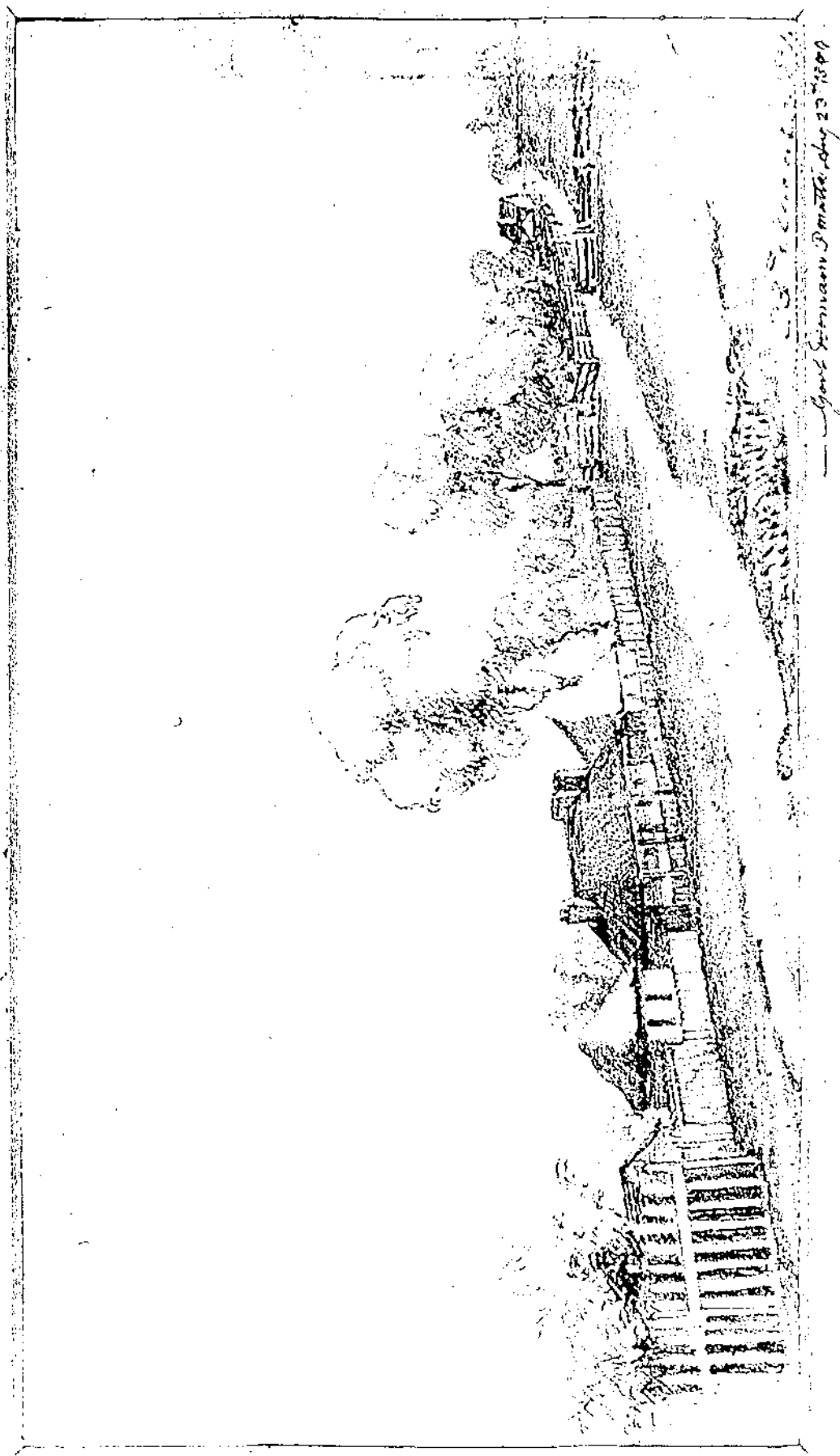
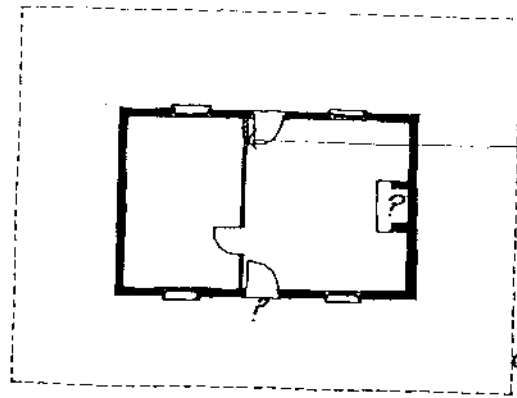


Fig. 1844

Sketch. Government Domain 23.8.1844. (5),(anon.). Views of Parramatta. (showing Dairy Precinct).

Mitchell Library, State Library of New South Wales. VIB PARR 1844/14.

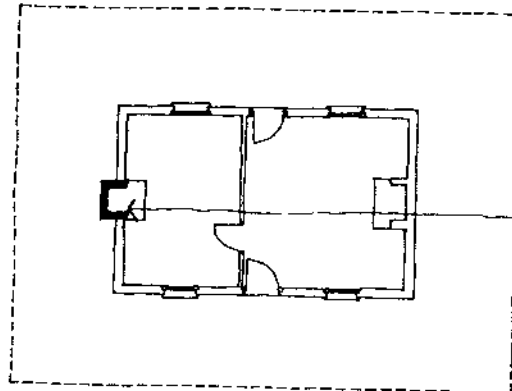
1  
c 1790



Partition added very soon after construction

Existing outline of Dairy Cottage shown dotted.

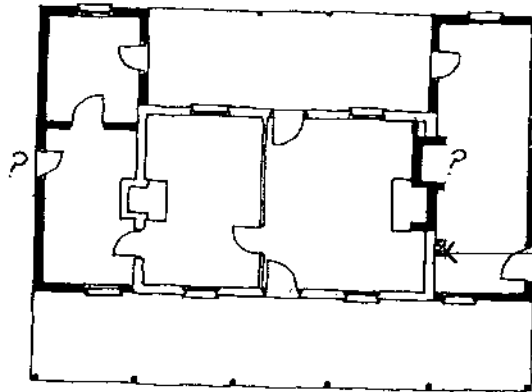
2  
c 1790 - 1800



Chimney added.

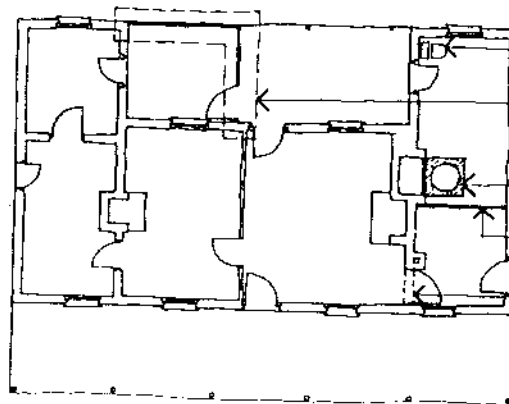
Existing outline of Dairy Cottage shown dotted.

3  
c 1816



Flue added later.

4  
c 1800 - 1920



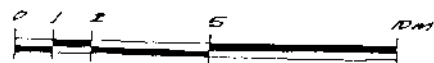
W.C. added c 1920

Timber enclosure added.

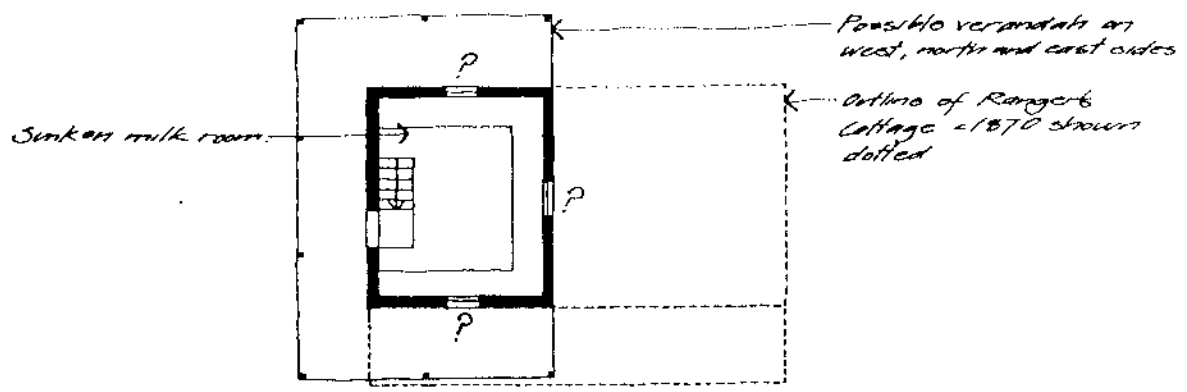
Copper installed.

Timber partition wall added

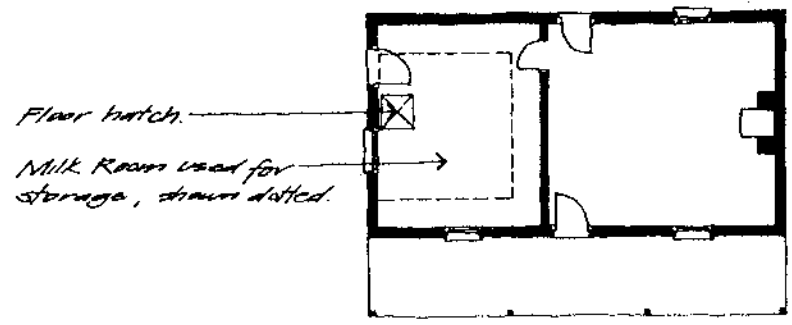
Door opening added later



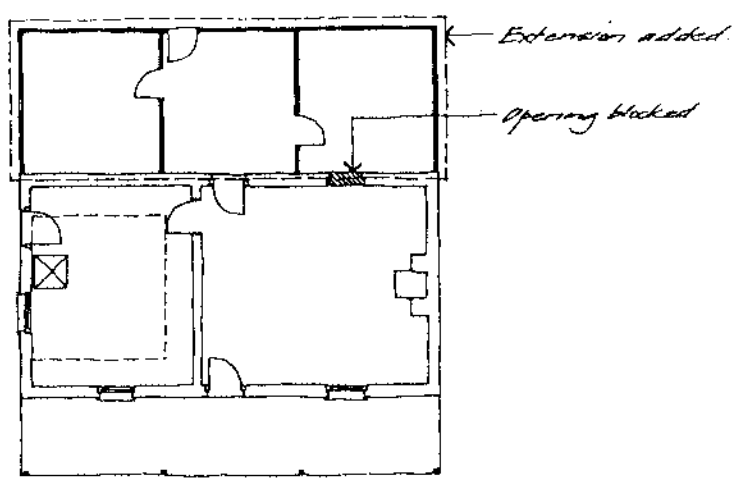
1  
c 1816



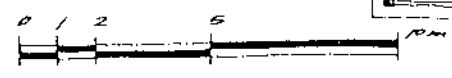
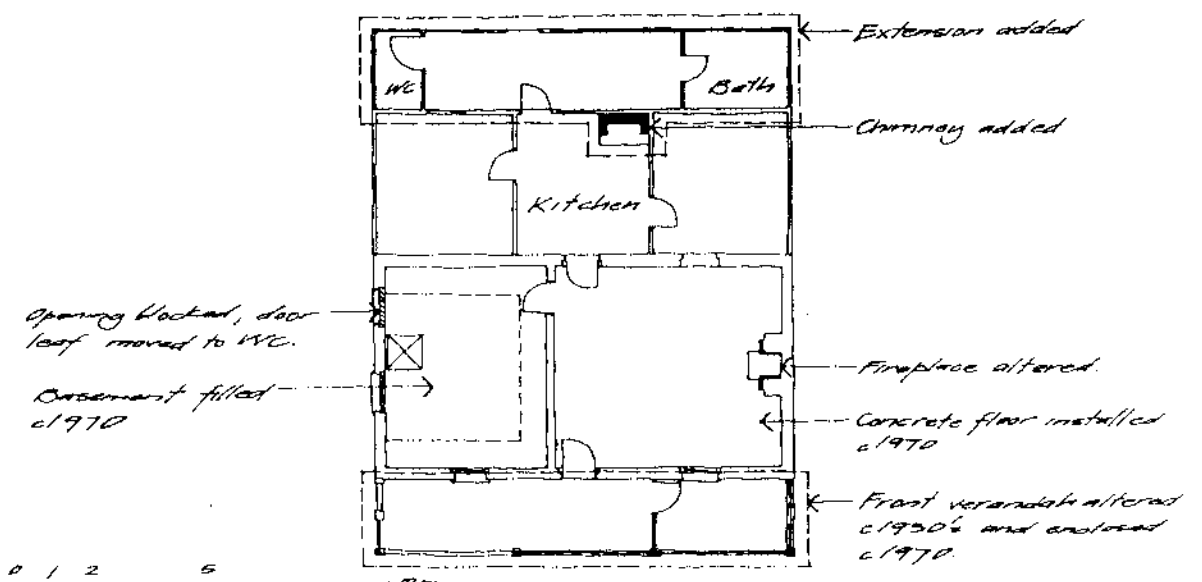
2  
c 1870



3  
c 1920



4  
c 1930



THE DAIRY PRCONGT, PARRAMATTA PARK RANGER'S COTTAGE, STAGES OF GROWTH

WORKING HYPOTHESES - VIEW FROM WEST

PHASING OF GOVERNMENT DAIRY WELL, PARRAMATTA PARK

c. 1797

(1A)-(2A) SALTER WELL  
NO WELL AT ALL (WHICH IS UNLIKELY - DESPITE THE STREAM).

1823

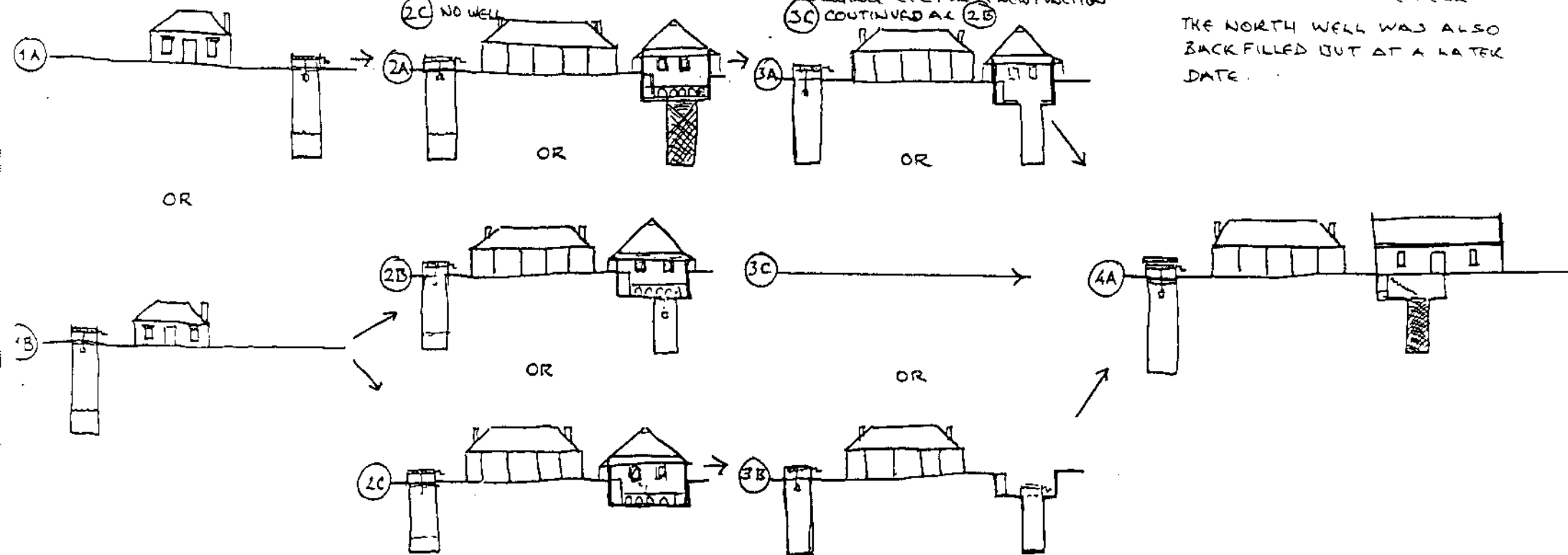
(2A) SUNK DAIRY CONSTRUCTED OVER THE OLD WELL (1A), THE WELL FILLED IN - 1823.  
(2B) WELL CONSTRUCTED IN DAIRY IN 1823 AS A COOLING DEVICE. BUT WOULD HAVE BEEN MENTIONED IN HARRIS.  
(2C) NO WELL

1850s-1870s-

(3A) WELL RE-EXCAVATED FOR A NEW FUNCTION - WHEN BENCHES WERE DEMOLISHED AND THE FLAGGING TAKEN UP. (MAY HAVE BEEN ONLY PARTIALLY EXCAVATED.)  
(3B) WELL EXCAVATED IN SUNK DAIRY AFTER REMOVAL OF FLAGGING ETC FOR A NEW FUNCTION  
(3C) CONTINUED AS (2B)

ca late 1870s, early 1880s.....

(4A) THE PRE-EXISTING WELL WAS FILLED IN - DAIRY DEMOLITION + "NEUTRAL" BROKEN-UP SHALE. THE SUNK DAIRY RE-CYCLED AS A CELLAR + THE RAUCER'S HOUSE BUILT OVER IT + THE WELL. THE NORTH WELL WAS ALSO BACK FILLED BUT AT A LATER DATE.



NOTE: THE SUNK DAIRY WELL HAS BEEN EXAMINED ON AN EXPLORATORY BASIS ONLY - ENOUGH TO CONCLUDE THAT THE FORMER DEPRESSION WAS A WELL, NOT A SUMP OR DRAIN - AND THAT THE EARLIEST FILL EXAMINED TO DATE IS CIRCA 1880.

SCHEMATIC PHASING OF THE WELLS  
RVJV  
12061994